



Thornton Heath Nursery School Newsletter

Wednesday 18th October 2022



Dear Parents and Carers,

What a fantastic start to the school year! It's hard to believe that we have nearly come to the end of the first half term.

Your children have started off their school journey with lots of enthusiasm and are thoroughly enjoying new learning that has been put in place by the THNS team.

We have introduced bread baking as part of our weekly activities as well as adding a focus artist for each half term and a focus music genre for each half term. We are currently working hard to create a designated "arts" room where your children will be able to create large (and small) masterpieces! If any of you, your family or friends play a musical instrument and would be willing to play in front of the children please let us know. It would be a wonderful experience for them.

We would like to remind you that the school closes at **3.30pm** on **Friday 21st October 2022** and doesn't re-open until **8.30 am Wednesday 2nd November 2022**.

SAVE THE DATE

After the half term break we would like to take the children for an autumn walk to Grange Park where we can look at the signs of autumn and gather autumnal leaves, conkers, sticks etc. We can only do this if we have enough parent helpers as we have to maintain a high ratio of adults to children when we venture out of the nursery environment.

We would like to be able to do this for both of the nursery rooms (on separate dates).

Nursery room : Wednesday 16th November 2022 (9.30 am or 12.45pm)

Ladybird room : Wednesday 23rd November 2022 (9.30 am or 12.45pm)



Our wonderful world



Our topic after the half term holiday is Our Wonderful World. As part of this topic we will be looking at celebrations and festivals from around the world. We would like you to send in a photograph of your family at a celebration or gathering and can include whoever you see as your family network; close friends and partners, Grannies and Grandads, even next door neighbours! Please include the names by which your child knows the people in the photos and who they are; this will help us to support discussions around our families. If you are unable to print a photo at home you can email it to the keepintouch@THNS.org email address and we can print it off for you.

Primary school applications

The application for primary school has to be made by 15th January 2023, this must be completed through e-admissions at www.croydon.gov.uk/admissions. This can be quite a daunting process and we recognise that for many of you this will be the first time you have had to make this type of application. If you need help to make the application please contact the school office and arrange a time with Caroline for some support. Many of the local schools are offering tours of their facilities to help you make a decision. Please check individual school websites for the date of these tours.


Safeguarding

Please remember to notify us if somebody different to the "norm" will be collecting your child. This is imperative to our safeguarding procedures. We operate a password system whereby you must give the office (if you telephone to notify us) or your child's keyworker a password that you have agreed with the person collecting your child. **If we have not been notified of this we will not let the child go until we have contacted the person who usually collects.**

Communications

Please make sure that we have your current telephone numbers and email addresses. As you know we are now emailing you a copy of our letters, newsletters etc in a bid to become more eco friendly. We also send you regular text reminders so it is important that we have a working telephone number. Finally, please remember that the nursery office is not "manned" between 11.30am and 12.30pm, if you need to speak to us please ring before 11.30am or after 12.30pm.




(Head of Nursery)

Please remember to check our website THNS.org for our events, newsletters and stories about our learning.

You can also follow our Facebook page and Twitter account @THNursery



We need your help!

We are trying to build up our resource bank of "loose parts"! These are items that you will find in your house and are often the things that you would throw away! Loose parts offer children infinite play opportunities, they allow children to do the thinking instead of the manufactured toy which has set directions. Please have a hunt around your home to see if you have any of the following items that you could donate or perhaps take a walk to the park and collect some items. We appreciate any donations made no matter how big or small.

Nature based loose parts

- Sticks
- Rocks
- Dried Flowers
- Leaves
- Seeds
- Pinecones
- Wood chips
- Shells
- Acorns
- Logs
- Sticks
- Feathers
- Anise Stars
- Cinnamon Sticks
- Nutmeg



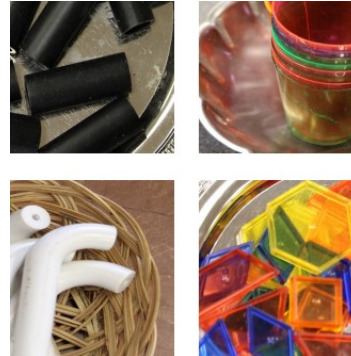
Wood reuse loose parts

- Corks
- Wooden Beads
- Golf Tees
- Dowels
- Wooden Blocks
- Candlesticks
- Napkin rings
- Wood scraps
- Wood pegs
- Scrabble pieces
- Wooden picture frames
- Thread spools



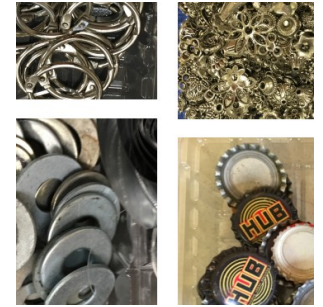
Plastic loose parts

- Milk Caps
- PVC pipes
- Reels
- Empty spice containers
- Curtain rings
- Hair rollers
- Straws
- CD cases
- Beads
- Bubble Wrap
- Lollipop sticks
- Buttons
- Funnels
- Plastic bead necklaces
- Golf balls
- Cups
- Hula hoops
- Bag clips



Metal loose parts

- Nuts and bolts
- Washers
- Tin foil
- Bangles
- Curtain rings
- Muffin tins
- Potato mashers
- Keys
- Bottle tabs
- Forks and spoons
- Metal lids
- Thimbles
- Door knobs
- Candle sticks



Fabric, yarn and ribbon loose parts

- Chiffon
- Twine
- Ribbon
- Silk
- Wool
- Ribbon
- Scarves
- Flags
- Yarn
- Embroidery thread
- Felt pieces
- Doilies
- Lace
- String



Ceramic and glass loose parts

- Ceramic tiles
- Glass Beads
- Gems
- Marbles
- Prisms
- Slate
- Flower pots
- Sea glass
- Glass vase beads

Packaging loose parts

- Packing
- Bubble Wrap
- Boxes
- Cardboard scraps
- Paper rolls
- Wrapping paper
- Painters tape
- Egg cartons
- Ribbon wheel
- Cereal boxes
- Paper scraps
- Rubber bands

